

MONTHLY MEMBERSHIP PROGRESS REPORT

LOCATION NEPAL

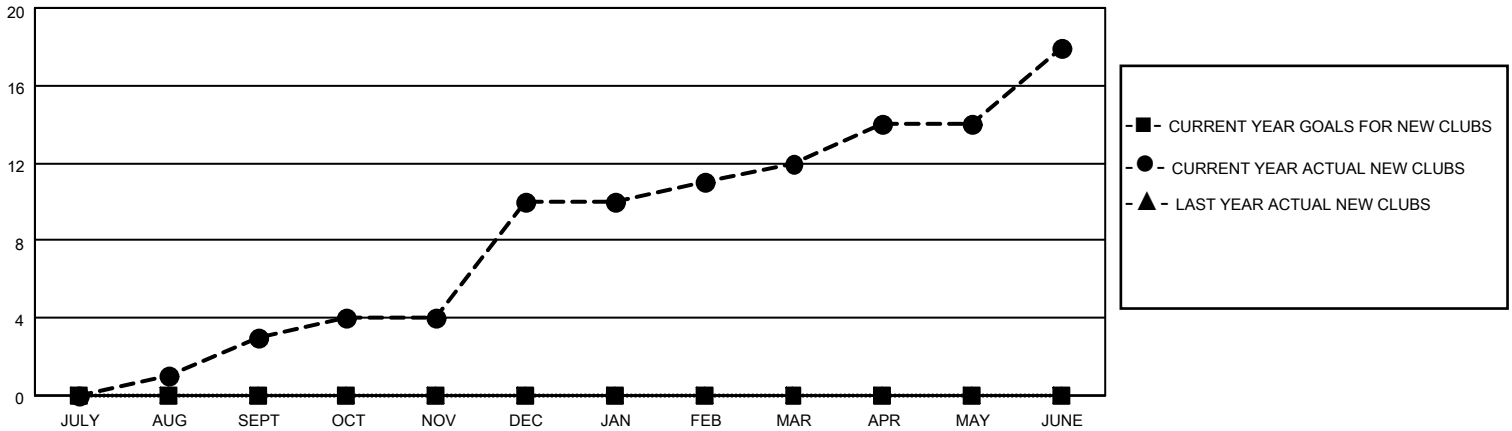
District 325 L

Results as of: 6/30/2023

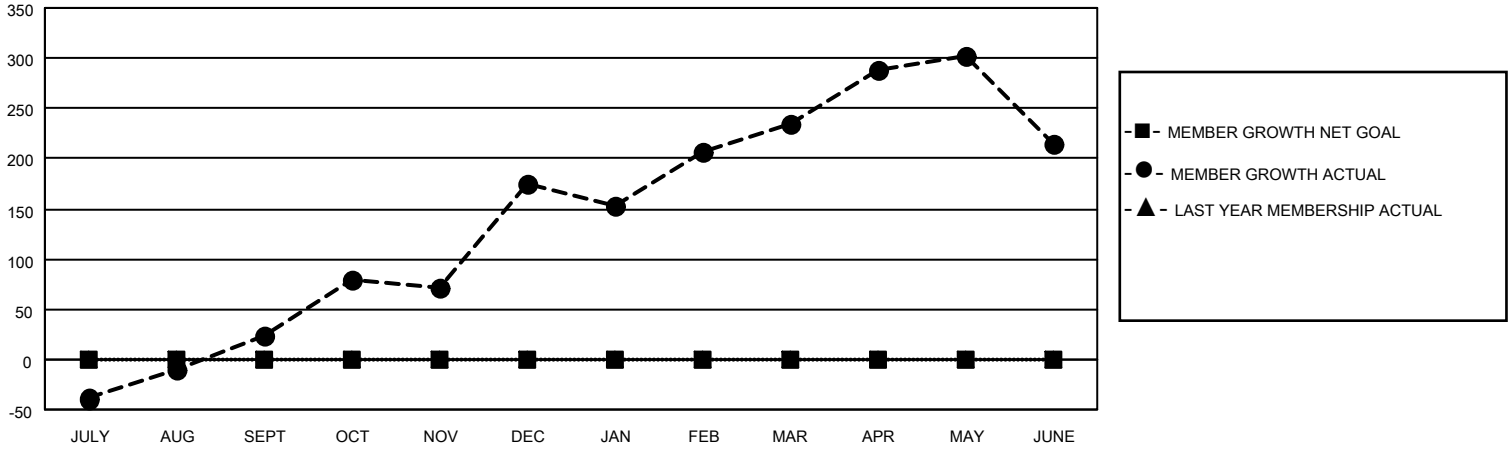
Clubs			
RESULTS FOR 2022-2023			
QUARTER	NEW CLUB GOAL	NEW CLUBS	DROPPED CLUBS
JULY/AUG/SEPT	0	3	2
OCT/NOV/DEC	0	7	0
JAN/FEB/MAR	0	2	2
APR/MAY/JUNE	0	6	4

Members			
RESULTS FOR 2022-2023			
QUARTER	MEMBER GROWTH NET GOAL	MEMBER GROWTH ACTUAL	DROPPED MEMBERS ACTUAL (including transfers)
JULY/AUG/SEPT	0	164	126
OCT/NOV/DEC	0	229	76
JAN/FEB/MAR	0	133	62
APR/MAY/JUNE	0	192	195

GOALS AND ACTUAL NEW CLUBS CUMULATIVE



GOALS AND ACTUAL MEMBERS CUMULATIVE



DROPPED CLUBS: 8

77 CLUBS OF 107 ADDED 1 OR MORE NEW MEMBERS

GENDER DISTRIBUTION

DROPPED MEMBERS

DECEASED	2
CLUB CANCELLED	83
OTHER	374
TOTAL	459

[CLICK HERE FOR CUMULATIVE MEMBERSHIP DATA](#)

MALE	1,715 (71.79%)
FEMALE	654 (27.38%)
NON BINARY	0 (0.00%)
PREFER NOT TO ANSWER	20 (0.84%)

TOTAL FAMILY UNIT MEMBERS 1,878

FAMILY MEMBERS PAYING HALF DUES 1,342